



41 Foxglove, Amington  
£975 pcm





- To Let with Next Place Property Agents
- Available Now
- Three Bedroom Semi Detached Property
- Fitted Kitchen/ Dining Area
- Good Size Lounge
- Family Bathroom
- Three generous Size Bedrooms
- Large Front and Rear Garden

## GROUND FLOOR

### Hall

Stairs to the first floor landing, doors to the kitchen and:

### Lounge 4.41m (14'6") x 3.55m (11'8")

Bow window to front, electric fire with wooden surround, radiator.

### Kitchen/Diner 4.41m (14'6") x 2.62m (8'7")

Refitted with a matching range of base and eye level units with granite worktop space over, 1+1/2 bowl stainless steel sink with single drainer and mixer tap, plumbing for washing machine, built-in eye level electric fan assisted oven, four ring halogen hob with extractor hood over, two windows to rear, radiator, door to storage cupboard with space for a fridge/freezer, door to the rear garden.

## FIRST FLOOR

### Landing

Door to an airing cupboard, all doors lead off.

### Bedroom 1 3.41m (11'2") x 2.50m (8'2")

Window to front, radiator, sliding door to fitted wardrobe.

### Bathroom

Refitted with a white three piece suite comprising panelled bath with independent electric shower over and glass screen, pedestal wash hand basin and low-level WC, tiled surround, window to rear, heated towel rail.

### Bedroom 2 2.95m (9'8") max x 2.50m (8'2")

Window to rear, radiator.

### Bedroom 3 2.71m (8'11") x 1.81m (5'11")

Window to front, radiator.

## OUTSIDE

### Garage 5.05m (16'7") x 2.35m (7'9")

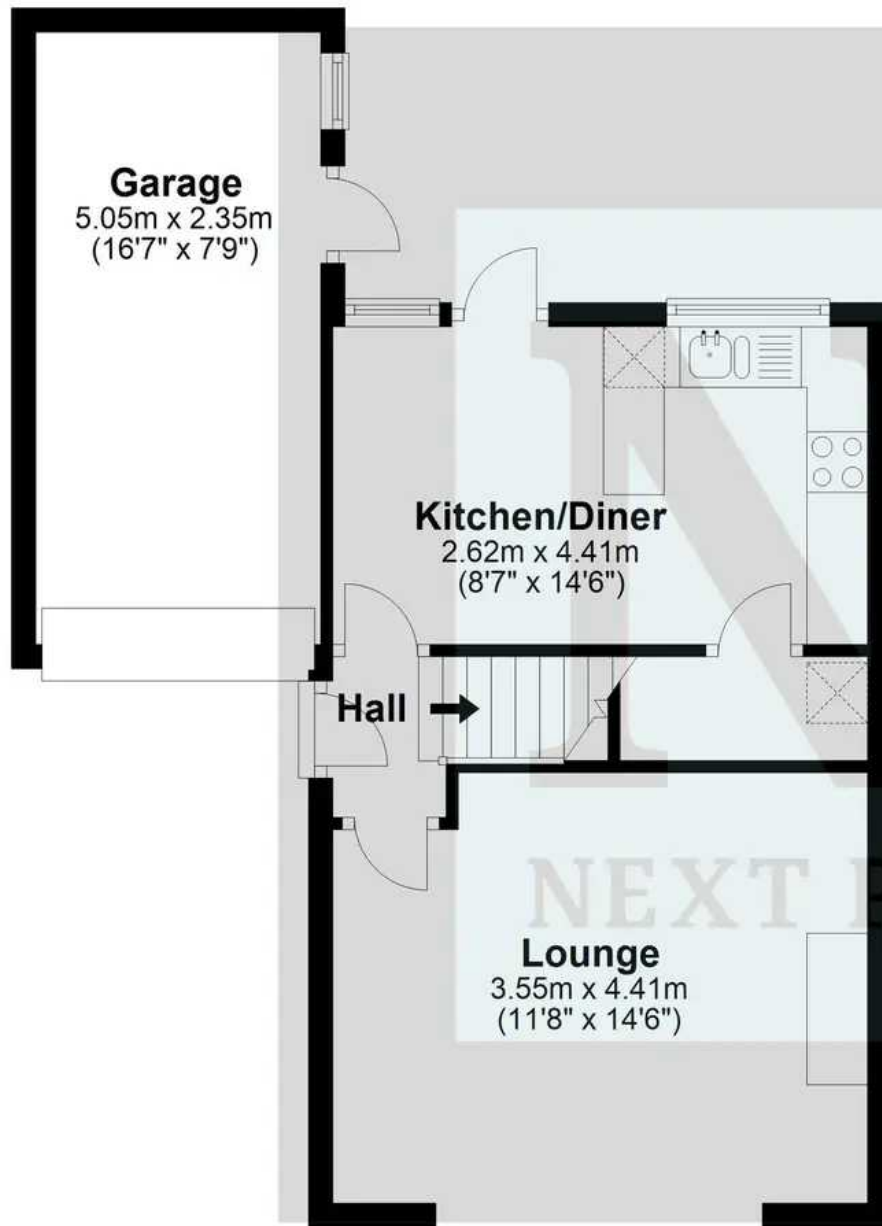
Window and door to the side, up and over door to the front, power and light.





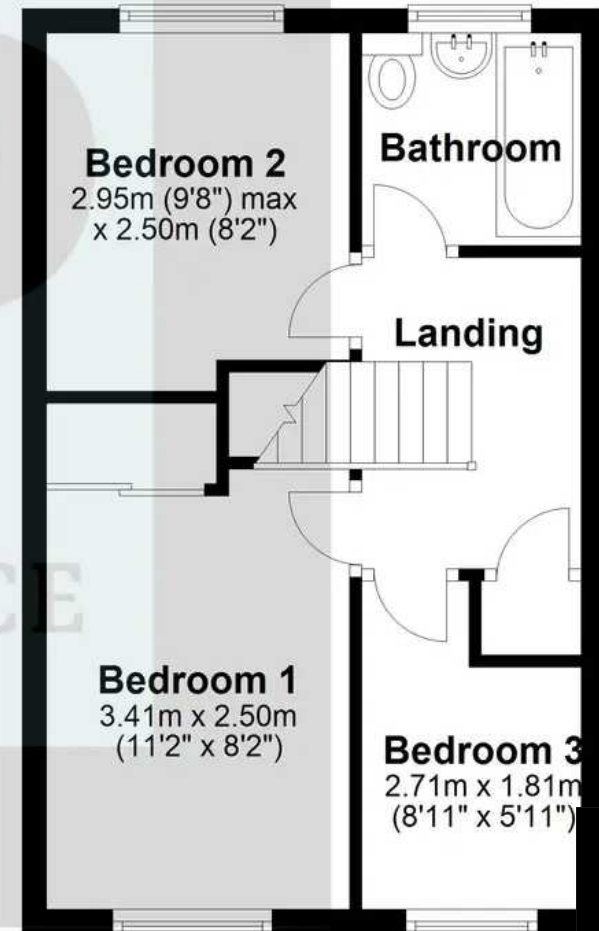
## Ground Floor

Approx. 44.6 sq. metres (480.2 sq. feet)



## First Floor

Approx. 31.9 sq. metres (343.1 sq. feet)



Total area: approx. 76.5 sq. metres (823.3 sq. feet)



## Next Place

Next Place Property Agents Ltd, 112 Glasgote Road - B77 2AF  
01827 50700 • [info@next-place.co.uk](mailto:info@next-place.co.uk) • [www.next-place.co.uk/](http://www.next-place.co.uk/)

