



## 98 Lindisfarne, Glascote

Offers Over £350,000



**\*\* VACANT POSSESSION WITH NO CHAIN \*\* For Sale  
With Next Place Property Agents \*\* Double  
Fronted Corner Plot \*\* Four Double Bedroom  
Detached Property \*\* Three Bathrooms \*\*  
Professional Video Tour \*\*  
Council Tax band: D**

**Tenure: Freehold**

- For Sale With Next Place Property Agents
- Being Offered With No Chain
- Double Fronted Corner Plot
- Four Double Bedroom Detached Property
- Three Bathrooms
- Professional Video Tour
- EPC Rating C



**Entrance Hall**

**Lounge**

16' 10" x 11' 9" (5.12m x 3.58m)

**Dining Room**

11' 9" x 8' 4" (3.58m x 2.55m)

**Kitchen**

17' 4" x 14' 5" (5.28m x 4.39m)

**Utility Room**

11' 0" x 7' 10" (3.36m x 2.39m)

**Wet Room**

**Bedroom One**

11' 6" x 11' 1" (3.50m x 3.39m)

**En-Suite**

**Bedroom Two**

15' 9" x 8' 10" (4.81m x 2.70m)

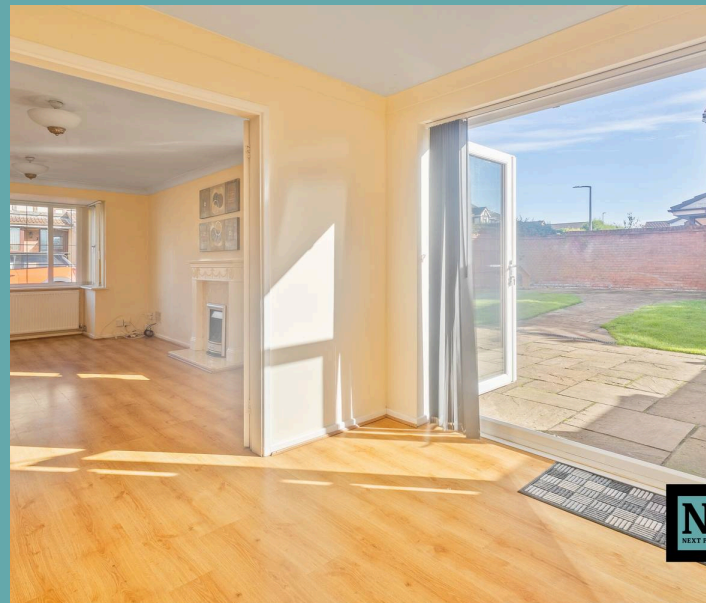
**Bedroom Three**

11' 10" x 8' 11" (3.61m x 2.72m)

**Bedroom Four**

10' 5" x 9' 9" (3.18m x 2.97m)

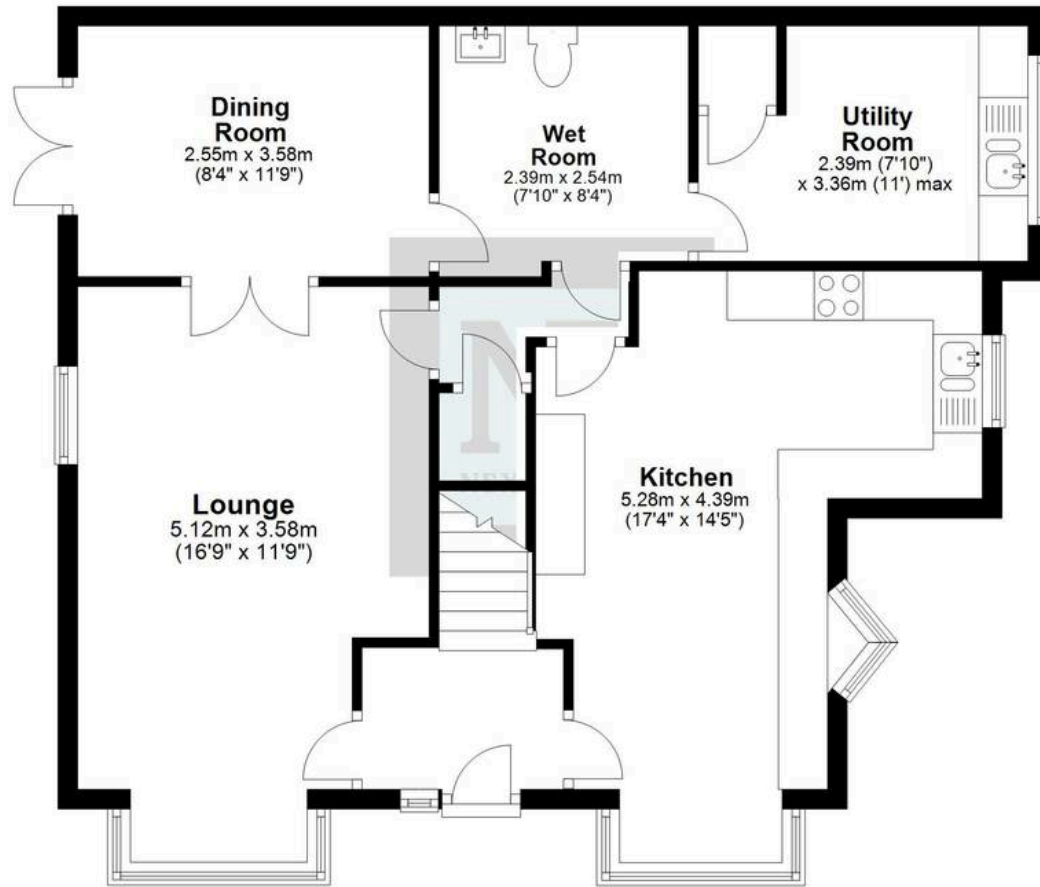
**Bathroom**





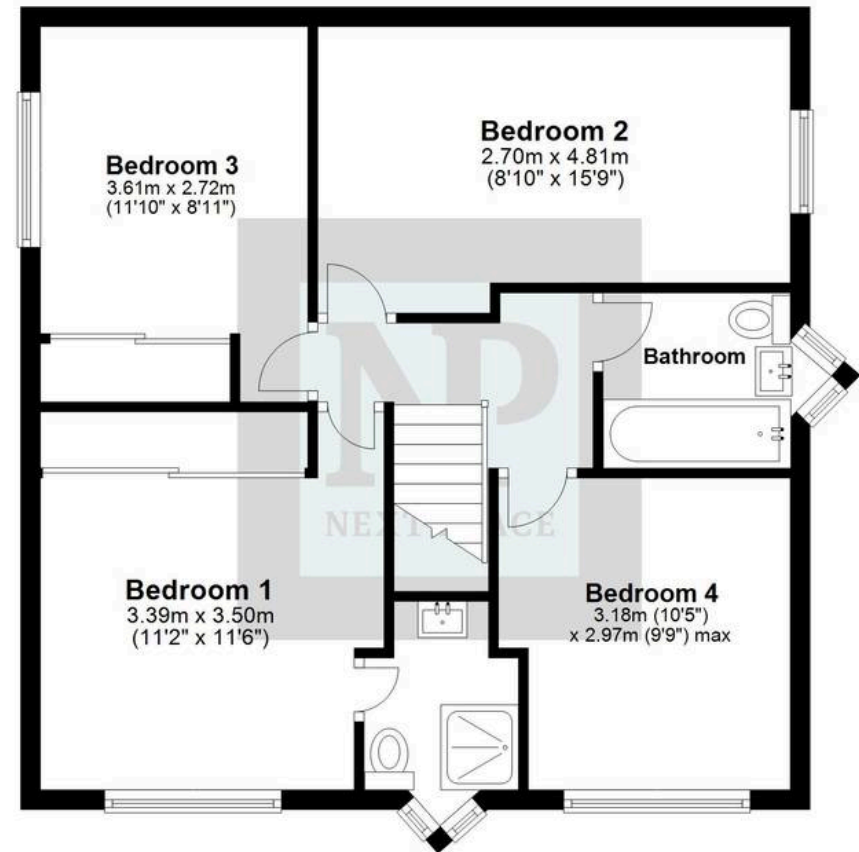
## Ground Floor

Approx. 69.5 sq. metres (747.8 sq. feet)



## First Floor

Approx. 58.7 sq. metres (632.2 sq. feet)



Total area: approx. 128.2 sq. metres (1379.9 sq. feet)



## Next Place

Next Place Property Agents Ltd, 112 Glascote Road - B77 2AF  
01827 50700 • [info@next-place.co.uk](mailto:info@next-place.co.uk) • [www.next-place.co.uk/](http://www.next-place.co.uk/)

