



**203 Meadow Way, Tamworth**

Guide Price **£539,000**

**NP**  
NEXT PLACE





Next Place Property Agents present a 5-bed detached house built in 2020 by Bellway Homes. Luxurious living in a sought-after location, featuring spacious lounge, study, open-plan kitchen/diner, 4 double bedrooms, 1 single bedroom, 3 bathrooms, and a 4-car driveway with a detached double garage.

Council Tax band: F

Tenure: Freehold

- For Sale With Next Place Property Agents
- Video Tour Available
- Built In 2020 By Bellway Homes
- 4 Double Bedrooms & 1 Single Bedroom
- 3 Bathrooms & Downstairs WC
- Open Plan Kitchen/Diner
- Spacious Lounge & Additional Snug/Study
- 4 Car Driveway
- Detached Double Garage
- EPC Rating B & Council Tax Band F





**Entrance Hall**

**Living Room**

16' 7" x 11' 8" (5.05m x 3.56m)

**Snug**

7' 10" x 10' 5" (2.38m x 3.17m)

**WC**

**Kitchen/Diner**

11' 8" x 29' 7" (3.56m x 9.03m)

**Utility**

6' 0" x 7' 1" (1.82m x 2.17m)

**Landing**

**Bedroom 1**

11' 11" x 11' 8" (3.64m x 3.56m)

**En-Suite**

**Bedroom 2**

10' 9" x 11' 11" (3.28m x 3.62m)

**En-Suite**

**Bedroom 3**

10' 9" x 10' 5" (3.28m x 3.17m)

**Bedroom 4**

8' 0" x 10' 5" (2.44m x 3.17m)

**Bathroom**

**Bedroom 5**

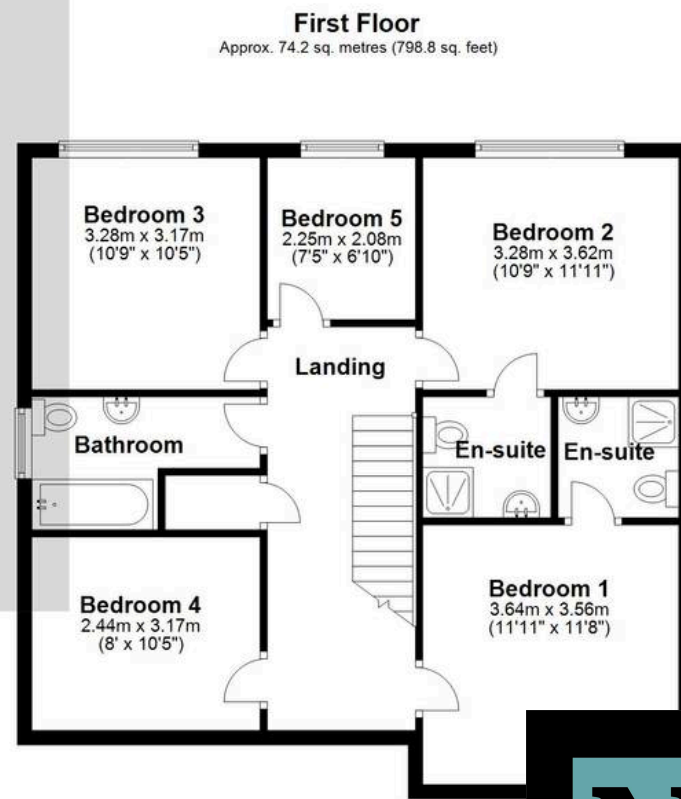
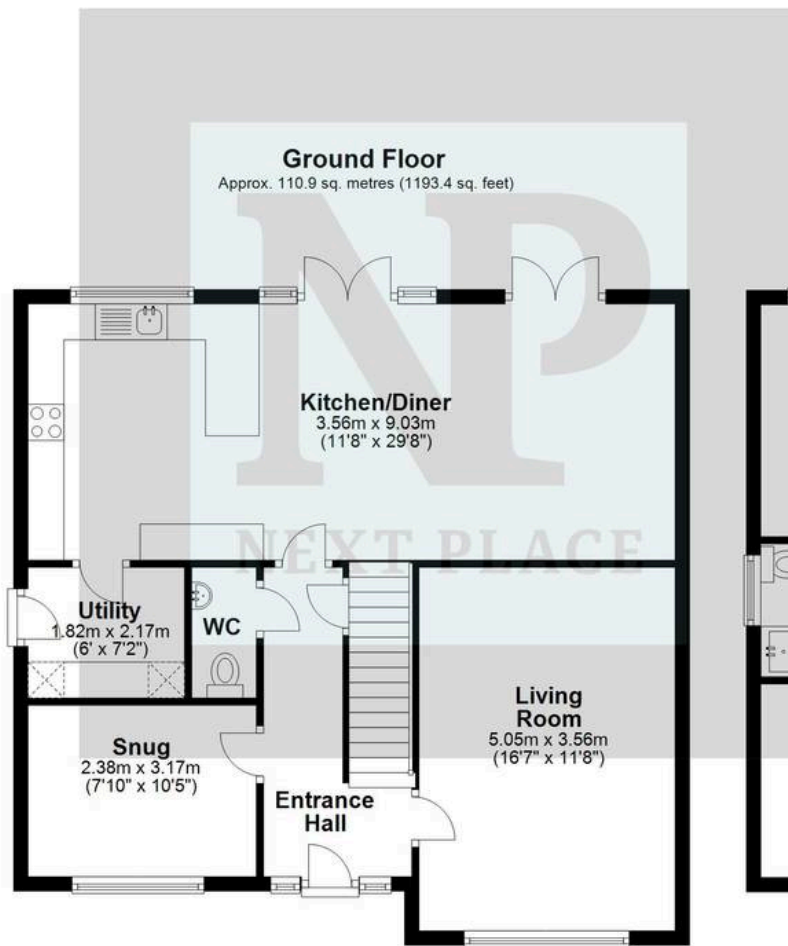
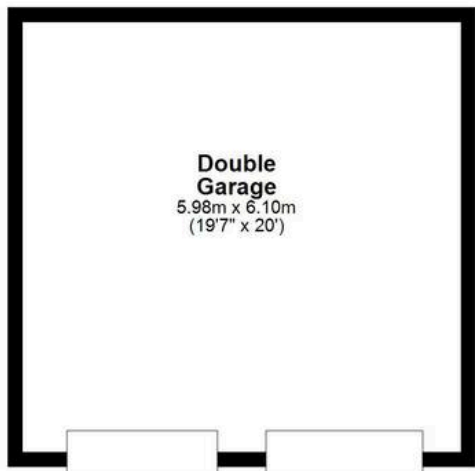
7' 5" x 6' 10" (2.25m x 2.08m)











Total area: approx. 185.1 sq. metres (1992.2 sq. feet)







## Next Place

Next Place Property Agents Ltd, 112 Glascote Road - B77 2AF  
01827 50700 • [info@next-place.co.uk](mailto:info@next-place.co.uk) • [www.next-place.co.uk/](http://www.next-place.co.uk/)

