



2 Limekilns, Polesworth

In Excess of £375,000



For Sale With Next Place Property Agents: A stunning 4-bed family home in a prime Polesworth location. Comprising of a modern kitchen, generous lounge/diner, conservatory as well as four double bedrooms, en-suite & family bathroom. A Driveway, single garage and out-house complete the list!

Council Tax band: D

Tenure: Freehold

- For Sale With Next Place Property Agents
- Video Tour Available
- Four Double Bedrooms
- Modern Kitchen
- Spacious Lounge/Diner
- Driveway & Single Garage
- Conservatory
- Out-House With Electricity
- Cul-De-Sac Location
- Council Tax Band D & EPC Rating C



Entrance Hall

Kitchen

10' 1" x 8' 8" (3.07m x 2.64m)

Lounge/Diner

11' 7" x 25' 2" (3.52m x 7.68m)

WC

Conservatory

9' 6" x 9' 0" (2.90m x 2.75m)

Landing

Bedroom 1

11' 8" x 9' 9" (3.55m x 2.98m)

En-Suite

Bedroom 2

10' 1" x 9' 9" (3.07m x 2.98m)

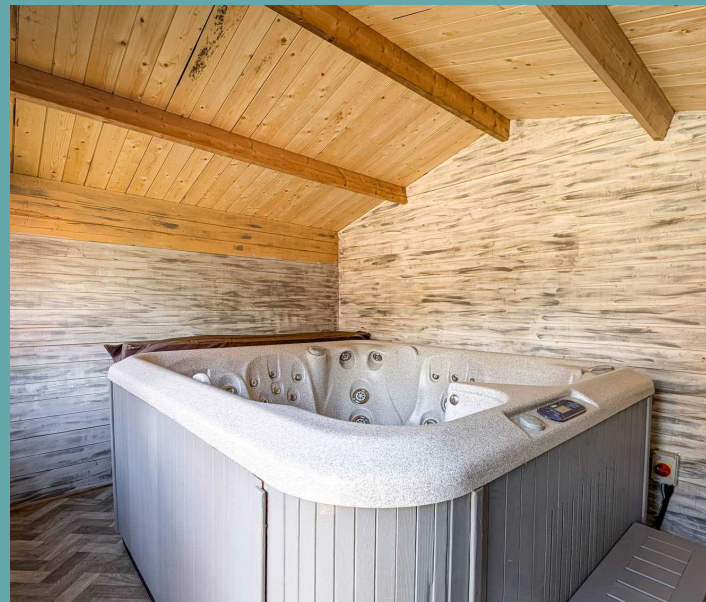
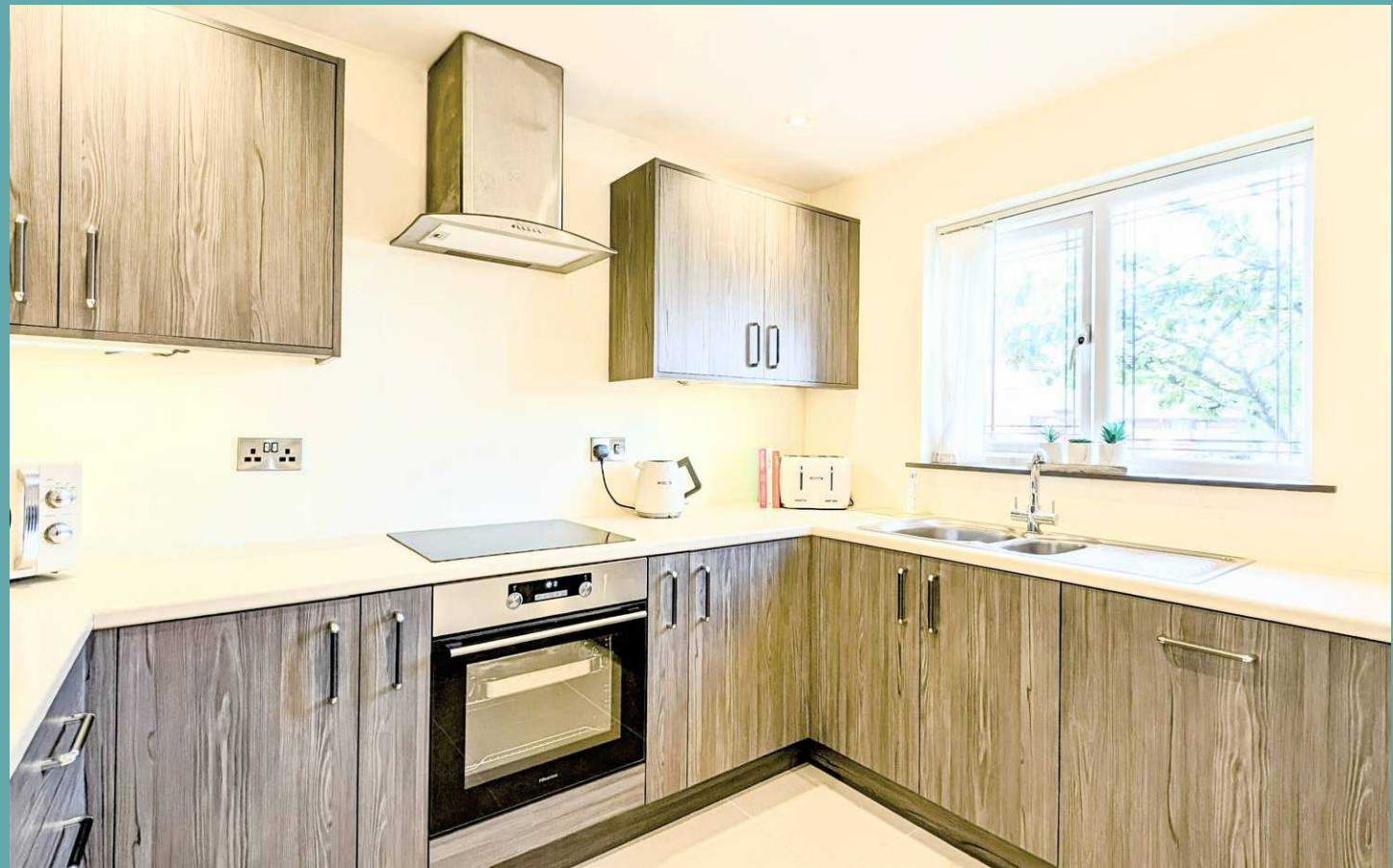
Bedroom 3

8' 8" x 9' 7" (2.65m x 2.93m)

Bedroom 4

10' 1" x 7' 10" (3.08m x 2.38m)

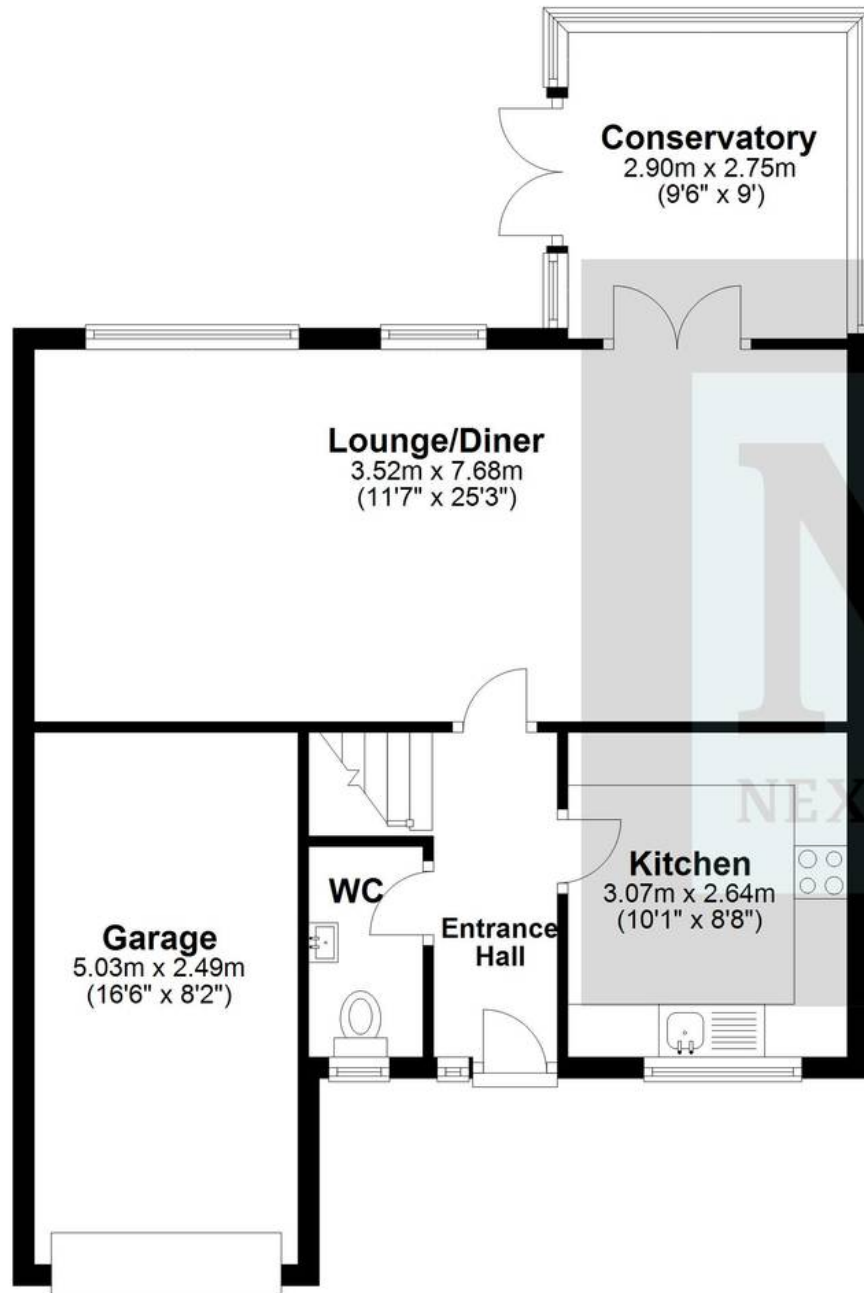
Bathroom





Ground Floor

Approx. 64.5 sq. metres (694.5 sq. feet)



First Floor

Approx. 54.0 sq. metres (581.4 sq. feet)



Total area: approx. 118.5 sq. metres (1275.9 sq. feet)





Next Place

Next Place Property Agents Ltd, 112 Glascote Road - B77 2AF
01827 50700 • info@next-place.co.uk • www.next-place.co.uk/

