



49 Parkfield Crescent, Tamworth

Offers in Region of **£260,000**





For Sale With Next Place Property Agents: A 3-bed semi-detached house for sale with potential for extension. No onward chain, spacious lounge, kitchen/diner, 3 well-appointed bedrooms, off-road parking and ample outdoor space for extension.

Council Tax band: B

Tenure: Freehold

- For Sale With Next Place Property Agents
- Potentially No Onward Chain
- Through Entrance Hallway
- 3-Bedroom Semi-Detached Family Home
- Full Width Kitchen/Diner
- Substantial Plot With Huge Scope For Extension STPP
- Off-Road Parking
- Council Tax Band B & EPC Rating TBC



Entrance Hall

Living Room

14' 4" x 12' 5" (4.36m x 3.79m)

Kitchen/Diner

10' 2" x 19' 9" (3.10m x 6.02m)

Outbuilding

10' 1" x 9' 6" (3.08m x 2.89m)

Bedroom 1

13' 0" x 12' 6" (3.96m x 3.82m)

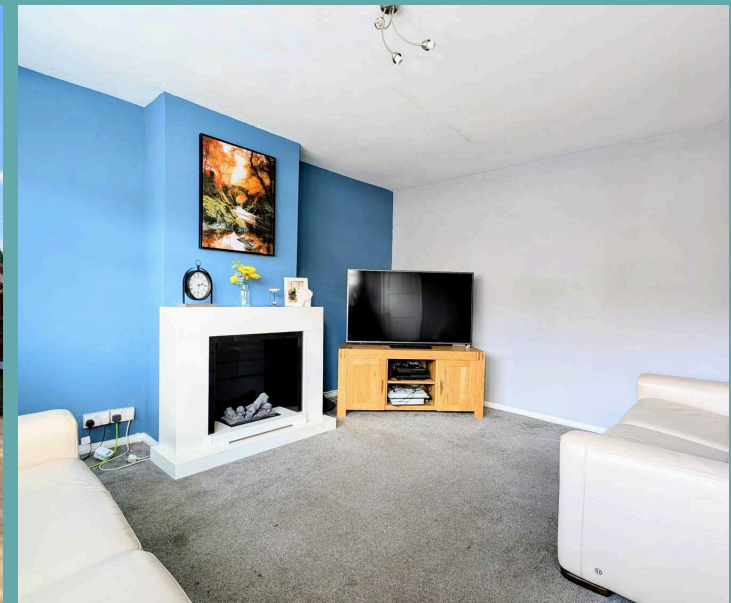
Bedroom 2

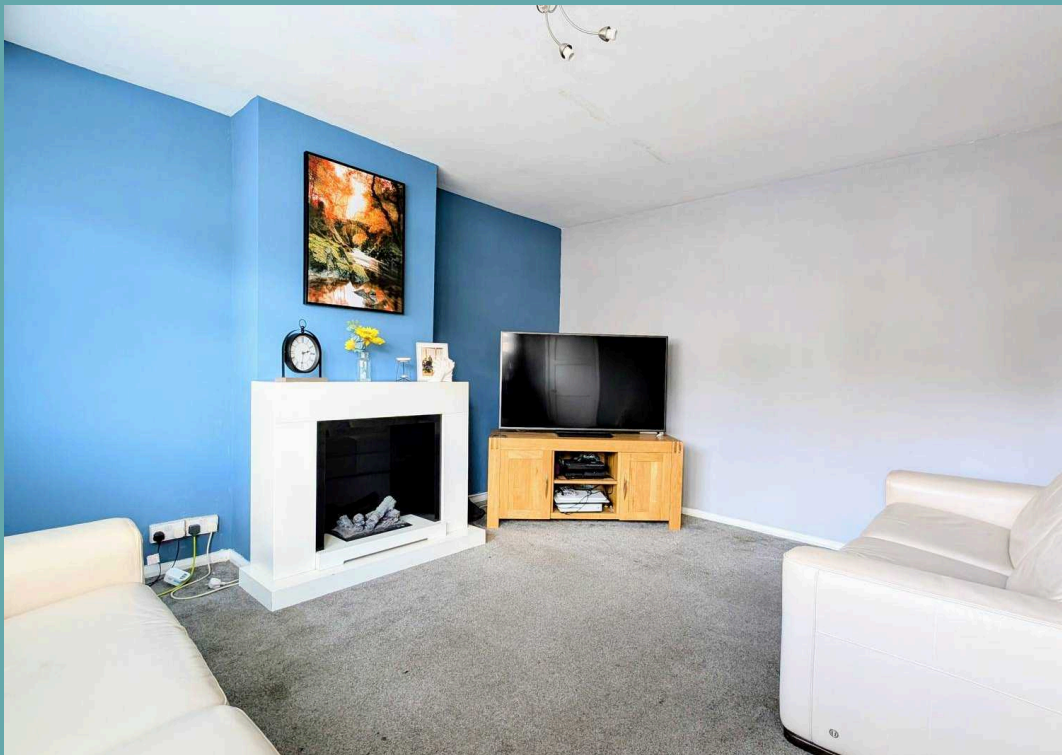
9' 9" x 12' 5" (2.98m x 3.79m)

Bedroom 3

9' 9" x 7' 0" (2.98m x 2.13m)

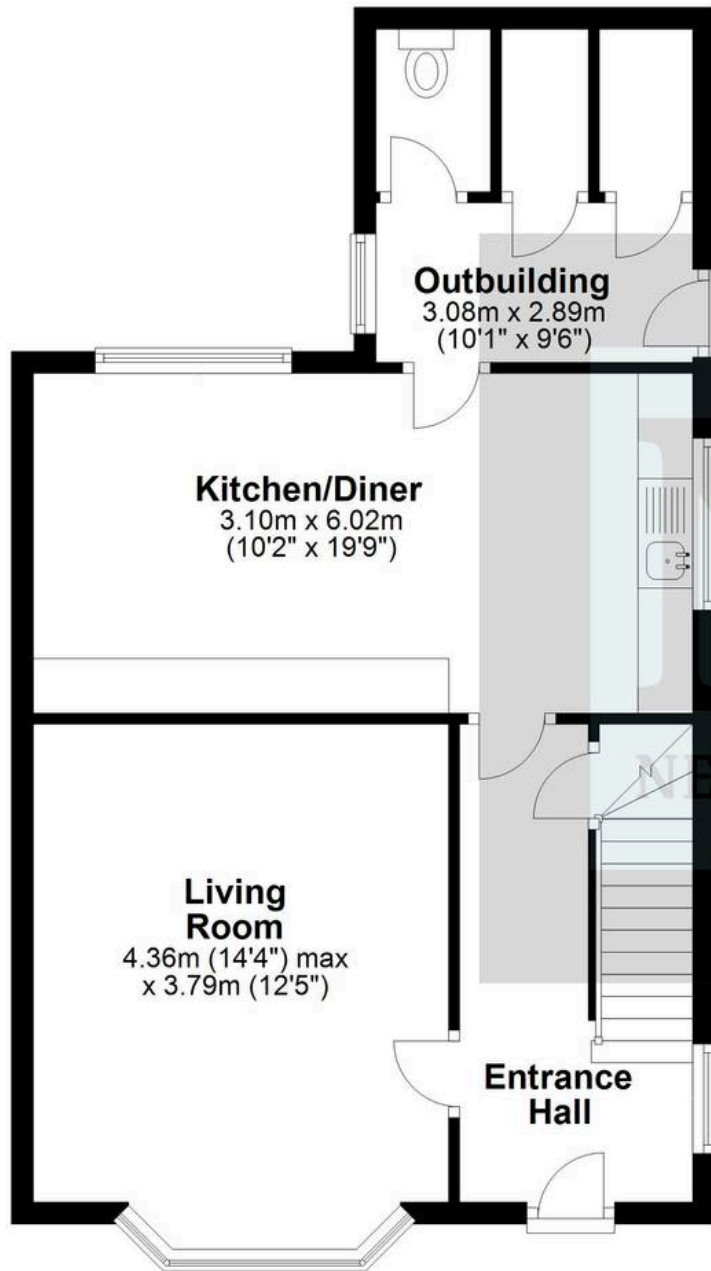
Bathroom





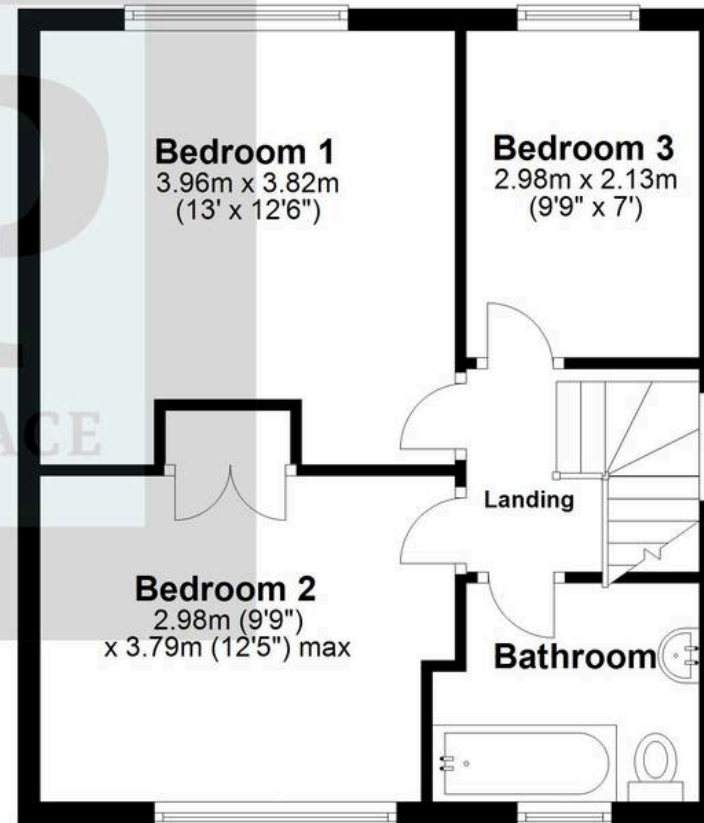
Ground Floor

Approx. 54.9 sq. metres (591.4 sq. feet)



First Floor

Approx. 42.4 sq. metres (456.4 sq. feet)



Total area: approx. 97.3 sq. metres (1047.8 sq. feet)



Next Place

Next Place Property Agents Ltd, 112 Glascoate Road - B77 2AF
01827 50700 • info@next-place.co.uk • www.next-place.co.uk/

