



16 Palmerston Avenue, Wilnecote

In Excess of £270,000







Beautifully presented 3-bed family home with open-plan kitchen/lounge/diner, three double bedrooms, modern bathrooms, landscaped rear garden, driveway and single garage. Ideal for a growing family.

Council Tax band: C

Tenure: Freehold

- For Sale With Next Place Property Agents
- Beautifully Presented 3-Bedroom Family Home
- Open-Plan Kitchen/Lounge/Diner
- Spacious Lounge With Juliet Balcony
- Modern Bathroom & En-Suite
- Single Garage
- Landscaped Rear Garden With Artificial Grass
- Council Tax Band C & EPC Rating D





**Entrance Hall**

**Kitchen/Lounge/Diner**

21' 0" x 15' 3" (6.40m x 4.64m)

**WC**

**Landing**

**Living Room**

10' 0" x 15' 3" (3.04m x 4.64m)

**Bedroom 3**

10' 2" x 8' 7" (3.09m x 2.61m)

**Landing**

**Bedroom 2**

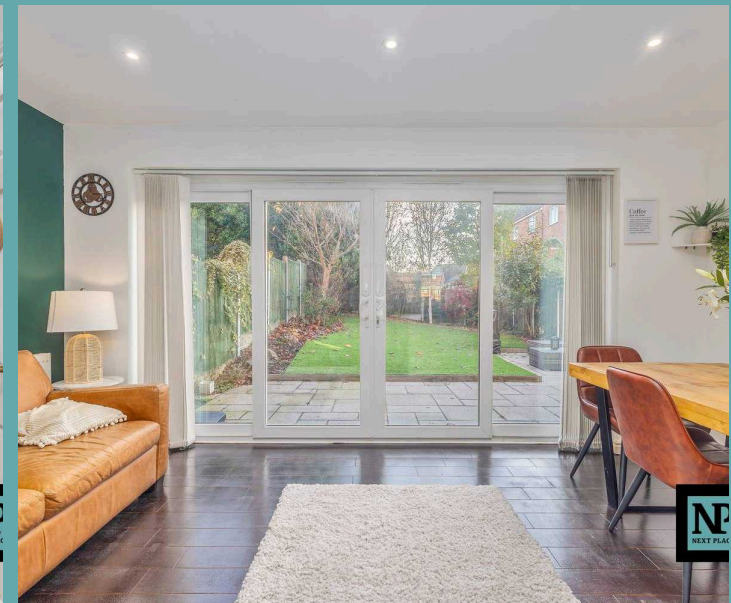
7' 4" x 11' 10" (2.23m x 3.60m)

**Bedroom 1**

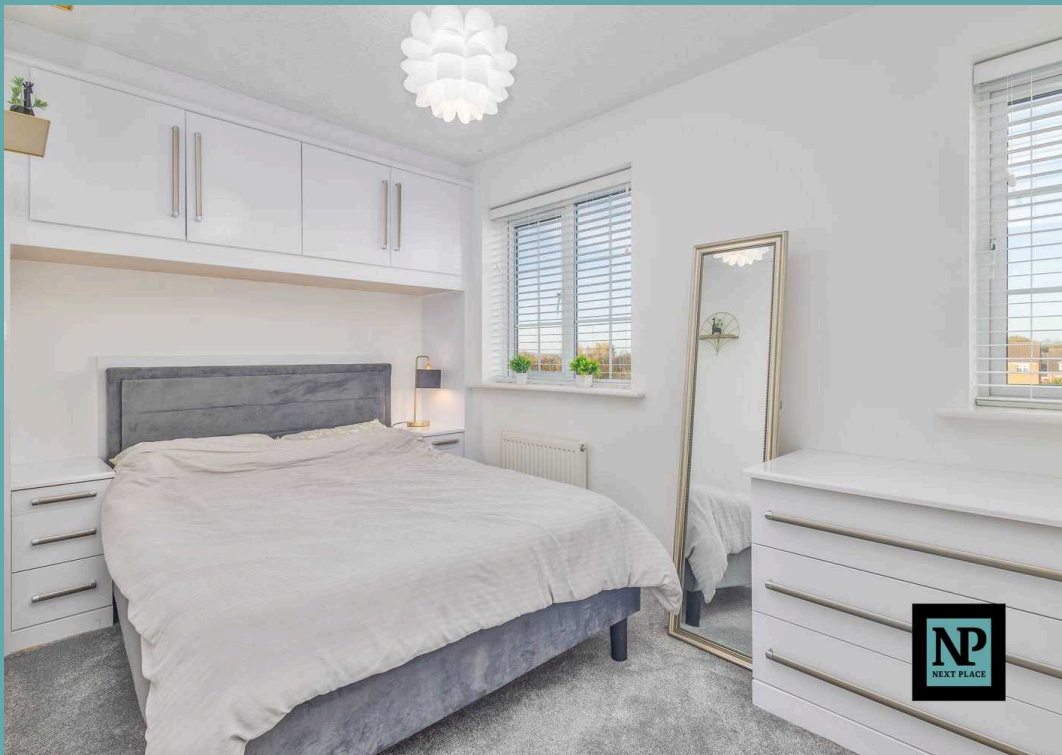
10' 1" x 11' 0" (3.08m x 3.35m)

**En-Suite**

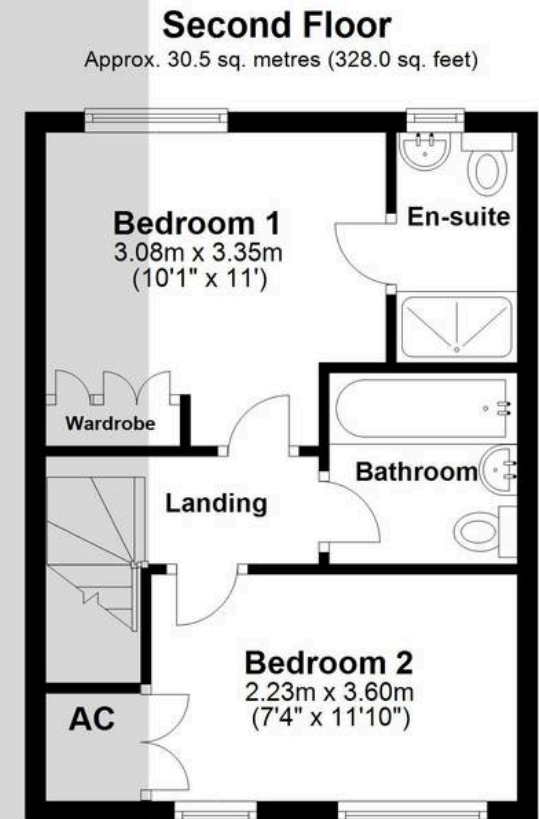
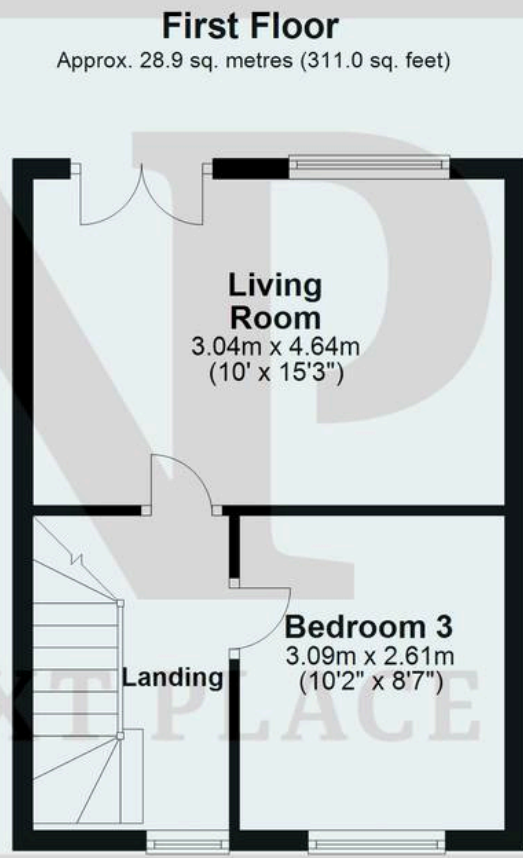
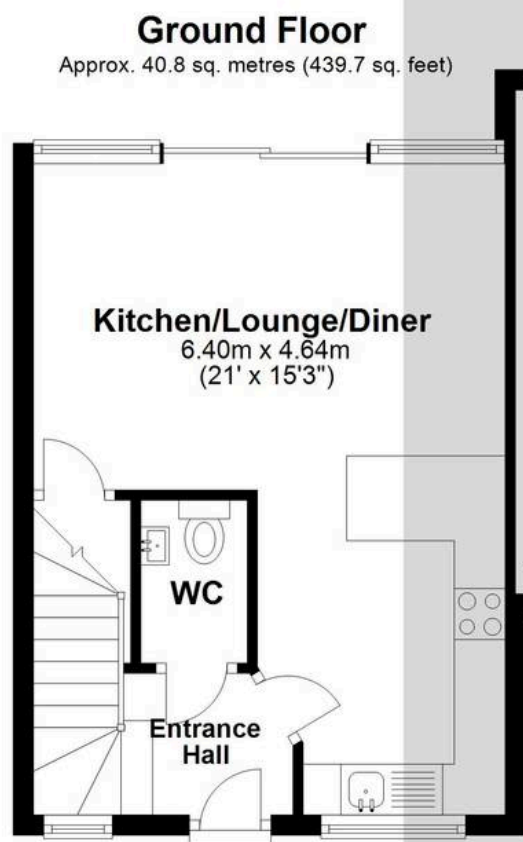
**Bathroom**











Total area: approx. 100.2 sq. metres (1078.7 sq. feet)





