



67 Honeybourne, Tamworth

In Excess of £180,000





**\*\* For Sale With Next Place \*\*** South-Facing Rear Garden **\*\* Single Garage \*\*** Kitchen/Diner **\*\* Spacious Lounge \*\*** Solar Panels **\*\***  
Council Tax band: A

Tenure: Freehold

- For Sale With Next Place Property Agents
- South-Facing Rear Garden
- Solar Panels
- Single Garage
- Kitchen/Diner
- Spacious Lounge
- Excellent Local Amenities & Transport Links
- Council Tax Band A & EPC Rating TBC



**Porch**

**WC**

**Living Room**

18' 5" x 11' 8" (5.61m x 3.56m)

**Kitchen/Diner**

18' 5" x 12' 3" (5.61m x 3.73m)

**Bedroom 1**

11' 10" x 9' 7" (3.61m x 2.91m)

**Bedroom 2**

11' 10" x 8' 5" (3.61m x 2.57m)

**Bedroom 3**

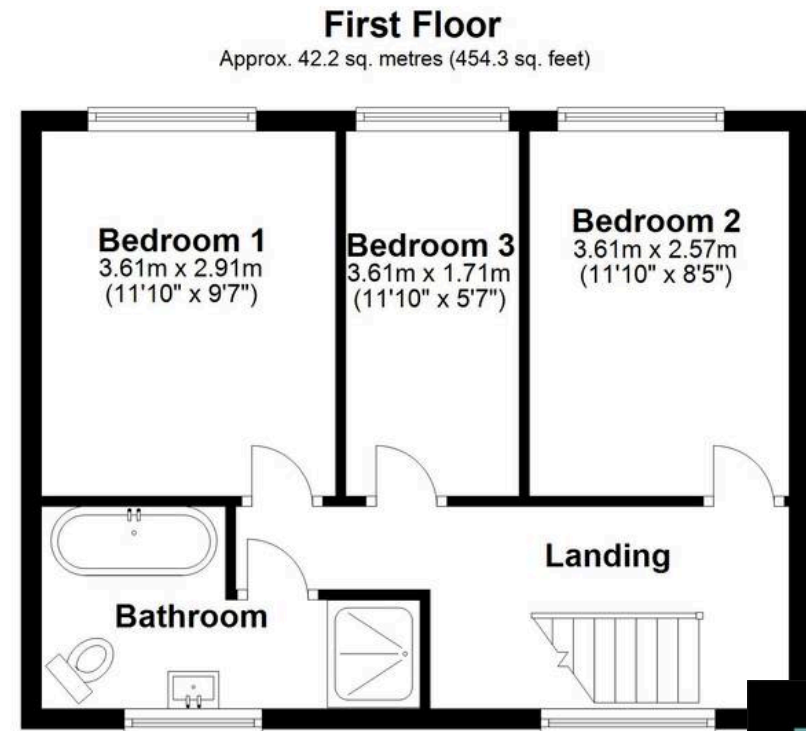
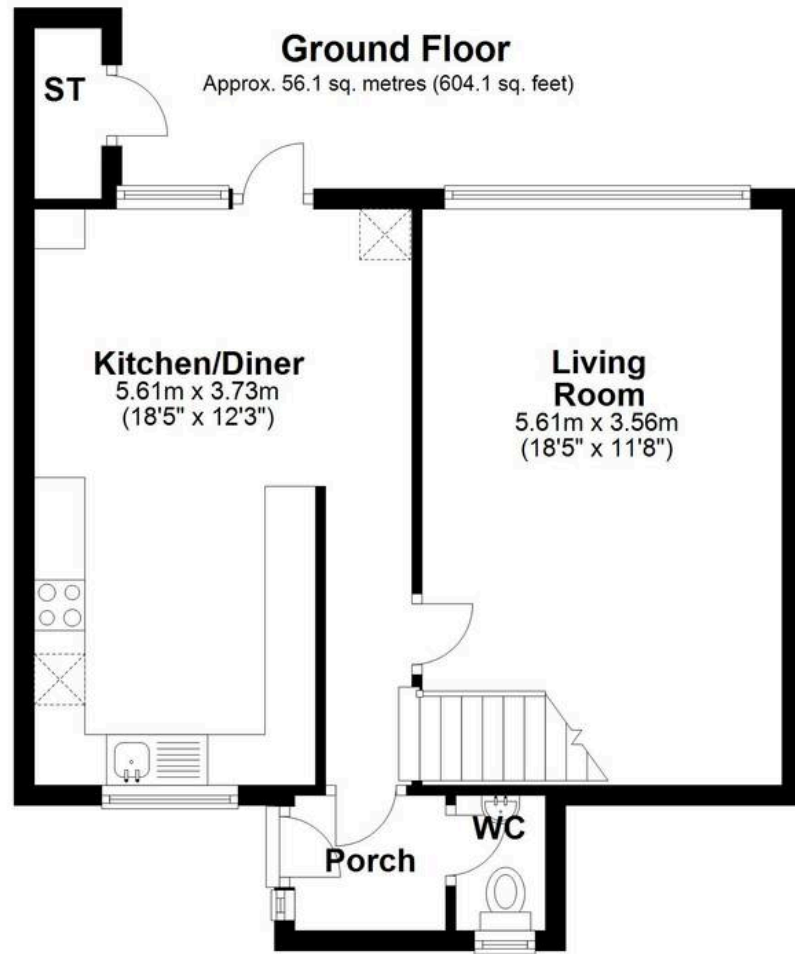
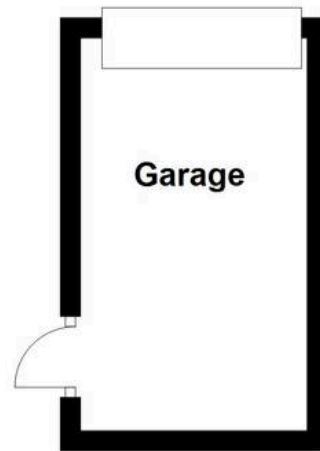
11' 10" x 5' 7" (3.61m x 1.71m)

**Bathroom**

**Landing**







Total area: approx. 98.3 sq. metres (1058.4 sq. feet)





## Next Place

Next Place Property Agents Ltd, 112 Glascote Road - B77 2AF  
01827 50700 • [info@next-place.co.uk](mailto:info@next-place.co.uk) • [www.next-place.co.uk/](http://www.next-place.co.uk/)

