



39 Grayling, Dosthill

Offers in Region of £250,000





Council Tax band: B

Tenure: Freehold

- FOR SALE WITH NEXT PLACE PROPERTY AGENTS
- LINK DETACHED FAMILY HOME
- 3 BEDROOMS
- GENEROUS REAR GARDEN
- SOUGHT AFTER LOCATION OF DOSTHILL
- VACANT POSSESSION
- NO ONWARD CHAIN



Hallway

Lounge / Diner

27' 6" x 12' 11" (8.38m x 3.93m)

Kitchen

11' 6" x 7' 9" (3.50m x 2.36m)

Master Bedroom

11' 1" x 9' 0" (3.39m x 2.74m)

Bedroom 2

11' 1" x 9' 0" (3.39m x 2.74m)

Bedroom 3

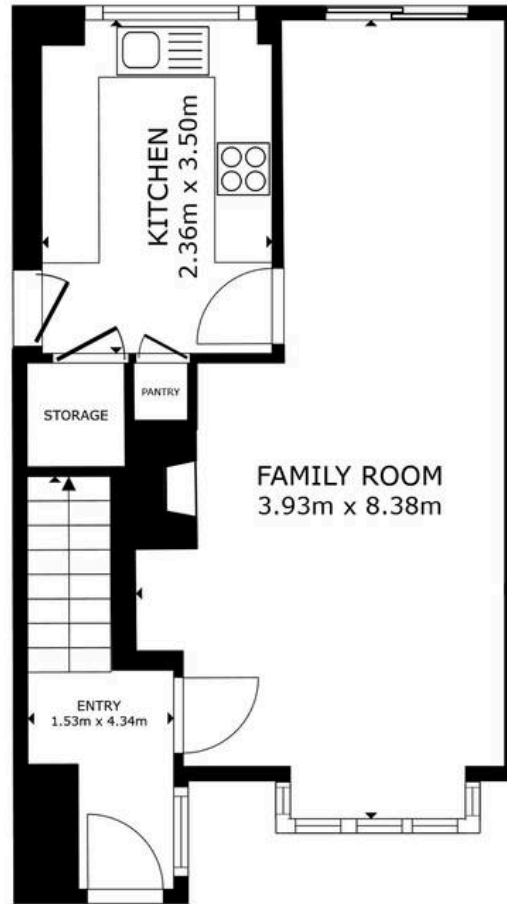
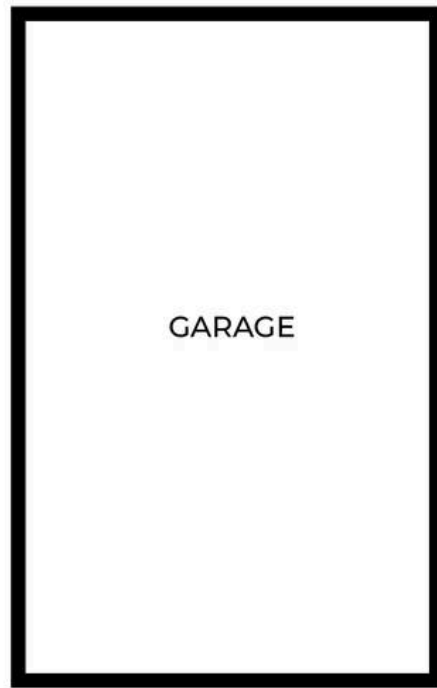
7' 9" x 6' 4" (2.37m x 1.93m)

Family Bathroom

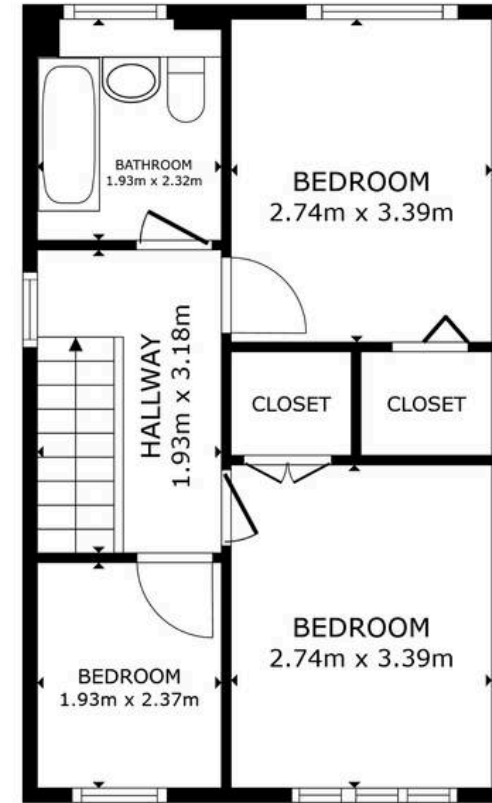
7' 9" x 6' 4" (2.37m x 1.93m)







FLOOR 1



FLOOR 2

FLOOR 1 41.3 m² FLOOR 2 38.5 m²
 EXCLUDED AREAS : PANTRY 0.3 m²
 TOTAL : 79.9 m²

SIZES AND DIMENSIONS ARE APPROXIMATE, ACTUAL MAY VARY.





Next Place

Next Place Property Agents Ltd, 112 Glascote Road - B77 2AF
01827 50700 • info@next-place.co.uk • www.next-place.co.uk/

