



## 9 Rosewood Close, Tamworth

Offers in Region of £240,000







For Sale With Next Place: A 3-bed semi-detached house with block paved driveway, integral garage, fitted kitchen, welcoming lounge/diner, modern bathroom & fantastic garden space. Council Tax band: B

Tenure: Freehold

- For Sale With Next Place Property Agents
- Video Tour Available
- Spacious Lounge/Diner
- Fitted Kitchen
- Modern Refitted Bathroom
- Integral Garage
- Block Paved Driveway
- Council Tax Band B & EPC Rating C





## Inner Hallway

## Living Room

13' 7" x 15' 7" (4.15m x 4.74m)

## Kitchen

11' 7" x 7' 2" (3.52m x 2.18m)

## Bedroom 1

9' 0" x 15' 7" (2.75m x 4.74m)

## Bedroom 2

11' 3" x 8' 5" (3.44m x 2.56m)

## Bedroom 3

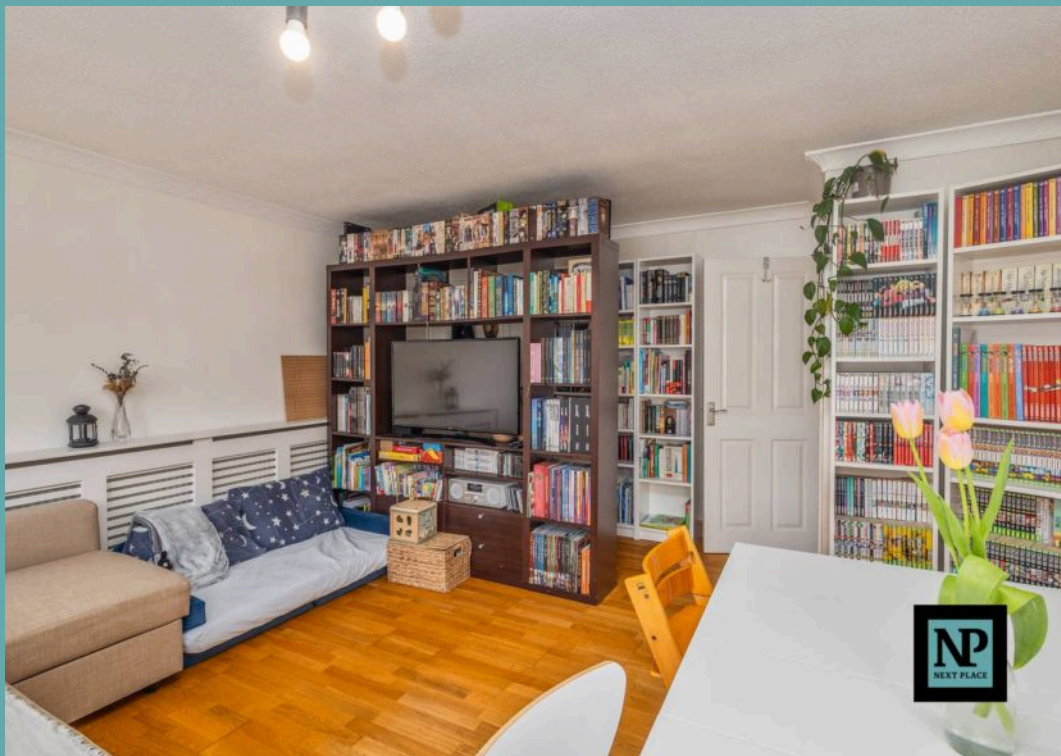
11' 3" x 6' 10" (3.44m x 2.08m)

## Bathroom

8' 4" x 5' 5" (2.53m x 1.64m)



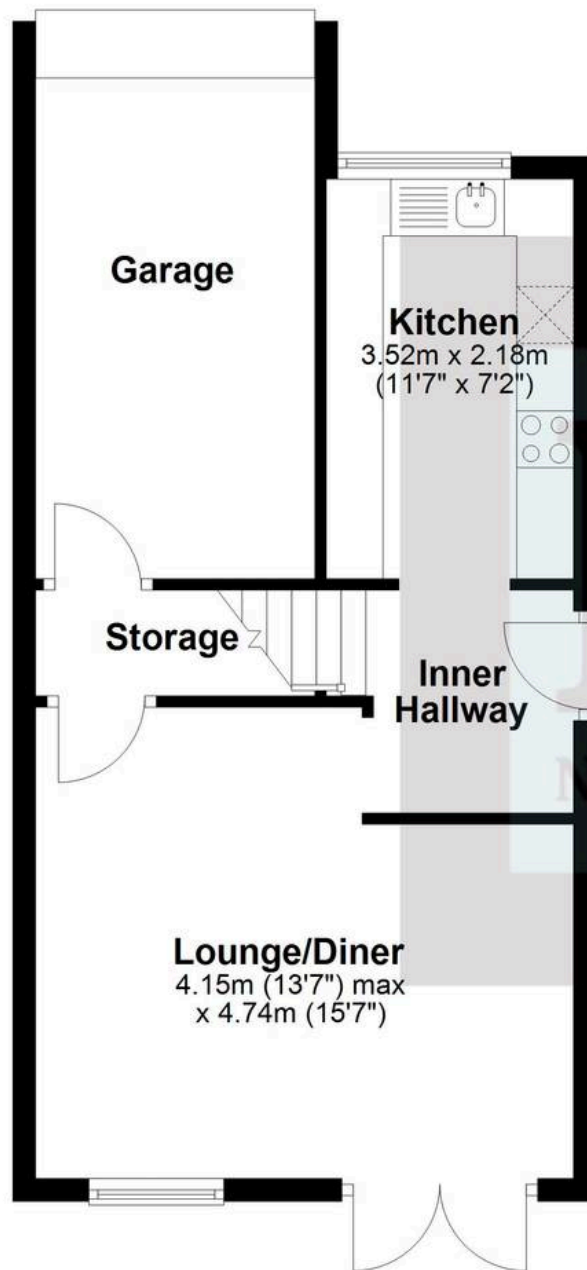






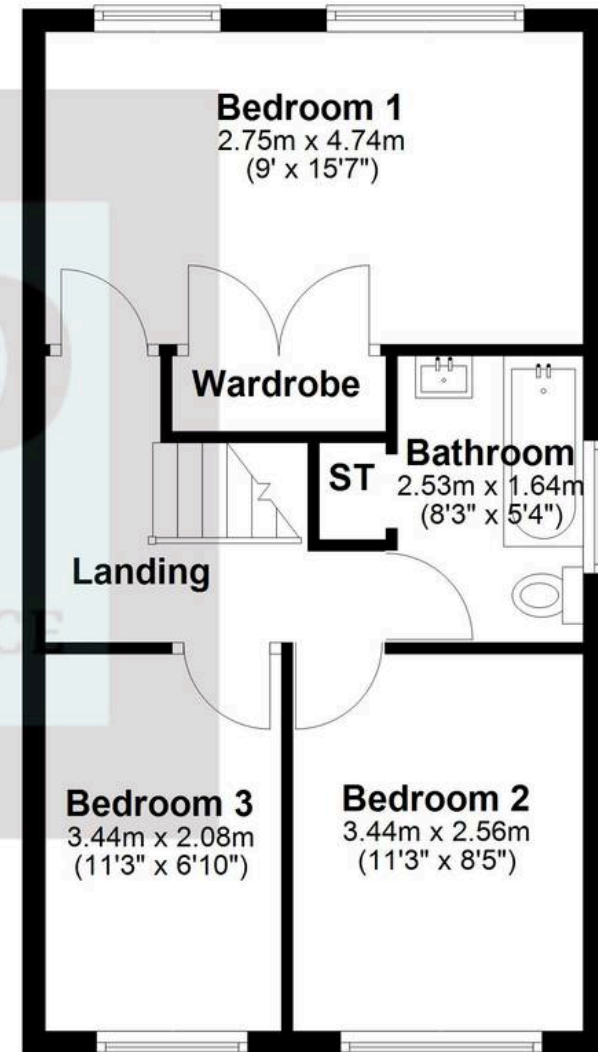
## Ground Floor

Approx. 44.2 sq. metres (475.7 sq. feet)



## First Floor

Approx. 41.2 sq. metres (443.9 sq. feet)



Total area: approx. 85.4 sq. metres (919.6 sq. feet)





## Next Place

Next Place Property Agents Ltd, 112 Glascote Road - B77 2AF  
01827 50700 • [info@next-place.co.uk](mailto:info@next-place.co.uk) • [www.next-place.co.uk/](http://www.next-place.co.uk/)

