



8 Croft Close, Elford
In Excess of **£210,000**





Charming 2-bed semi-detached house in Elford Village, Staffordshire. Perfect investment opportunity with garage, potential for renovation, and serene locale. Vacant possession, no chain. Contact Next Place Property Agents for viewing!
Council Tax band: B

Tenure: Freehold

- FOR SALE WITH NEXT PLACE PROPERTY AGENTS
- DESIRABLE ELFORD VILLAGE LOCATION
- 2 BEDROOM SEMI DETACHED PROPERTY
- IDEAL INVESTMENT OPPORTUNITY
- GARAGE AND OFF ROAD PARKING
- VACANT POSSESSION WITH NO ONWARD CHAIN



Hallway

Front Living Room

10' 4" x 6' 0" (3.15m x 1.83m)

Rear Living Room

10' 4" x 5' 1" (3.15m x 1.56m)

Kitchen

10' 4" x 5' 11" (3.15m x 1.81m)

Bedroom 1

14' 2" x 9' 11" (4.32m x 3.01m)

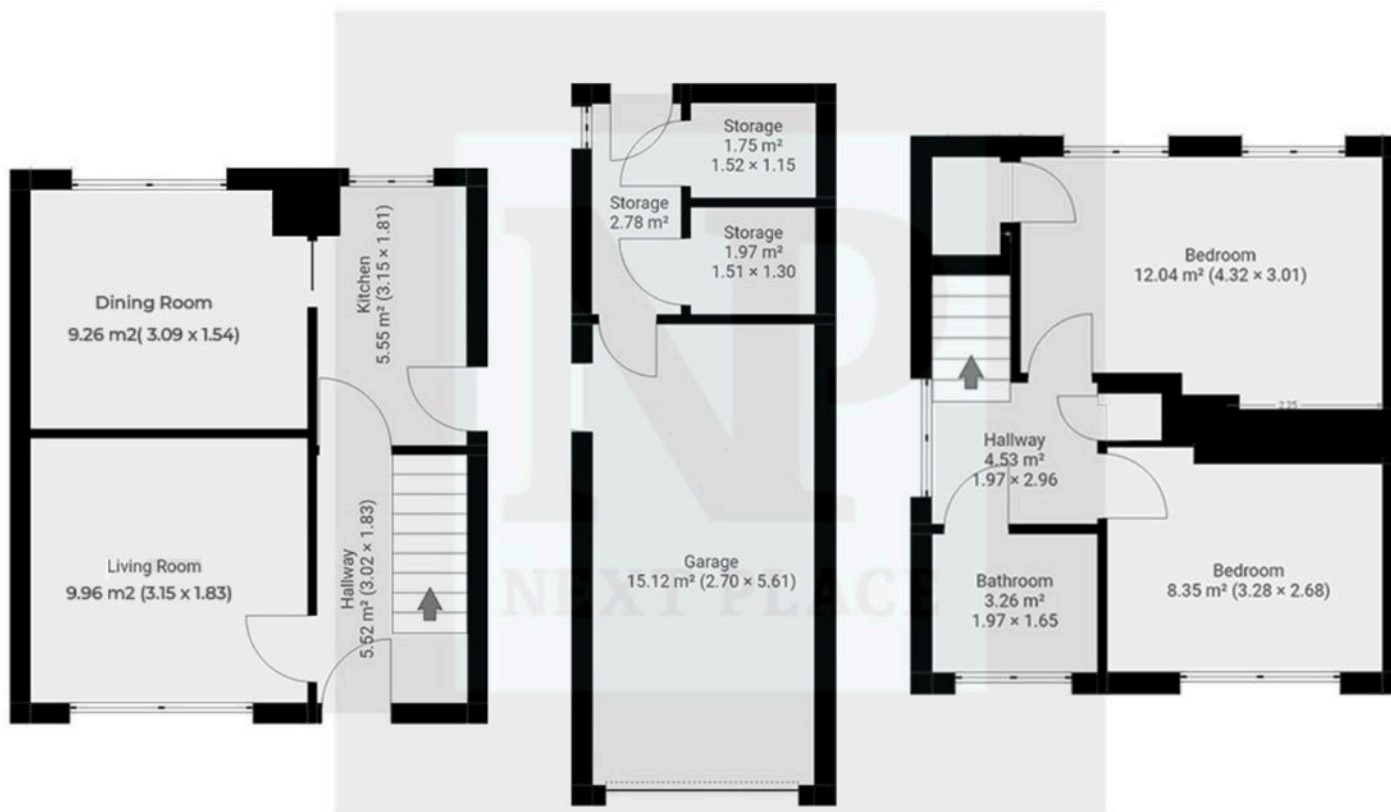
Bedroom 2

10' 9" x 8' 10" (3.28m x 2.68m)

Bathroom









Next Place

Next Place Property Agents Ltd, 112 Glascote Road - B77 2AF
01827 50700 • info@next-place.co.uk • www.next-place.co.uk/

