



40 Bailey Avenue, Hockley
£210,000





Charming semi-detached corner plot ideal for first-time buyers or small families. Spacious living areas, modern kitchen, 2 double bedrooms, tranquil oasis bathroom. Front drive, substantial garden, extra parking. Convenient location near amenities. Comfortable and practical living awaits! Contact us for a viewing. Council Tax band: A

Tenure: Freehold

- ON SALE WITH NEXT PLACE PROPERTY AGENTS
- SEMI DETACHED CORNER PLOT PROPERTY
- 2 DOUBLE BEDROOMS
- PERFECT PROPERTY FOR FIRST TIME BUYER OR SMALL FAMILY
- FRONT DRIVE FOR PARKING
- SUBSTANTIAL GARDEN SPACE
- ADDITIONAL PARKING AT THE BOTTOM OF THE GARDEN



Lounge

13' 11" x 13' 11" (4.23m x 4.24m)

Kitchen

7' 10" x 13' 11" (2.38m x 4.24m)

Bedroom

11' 2" x 14' 2" (3.41m x 4.33m)

Bedroom

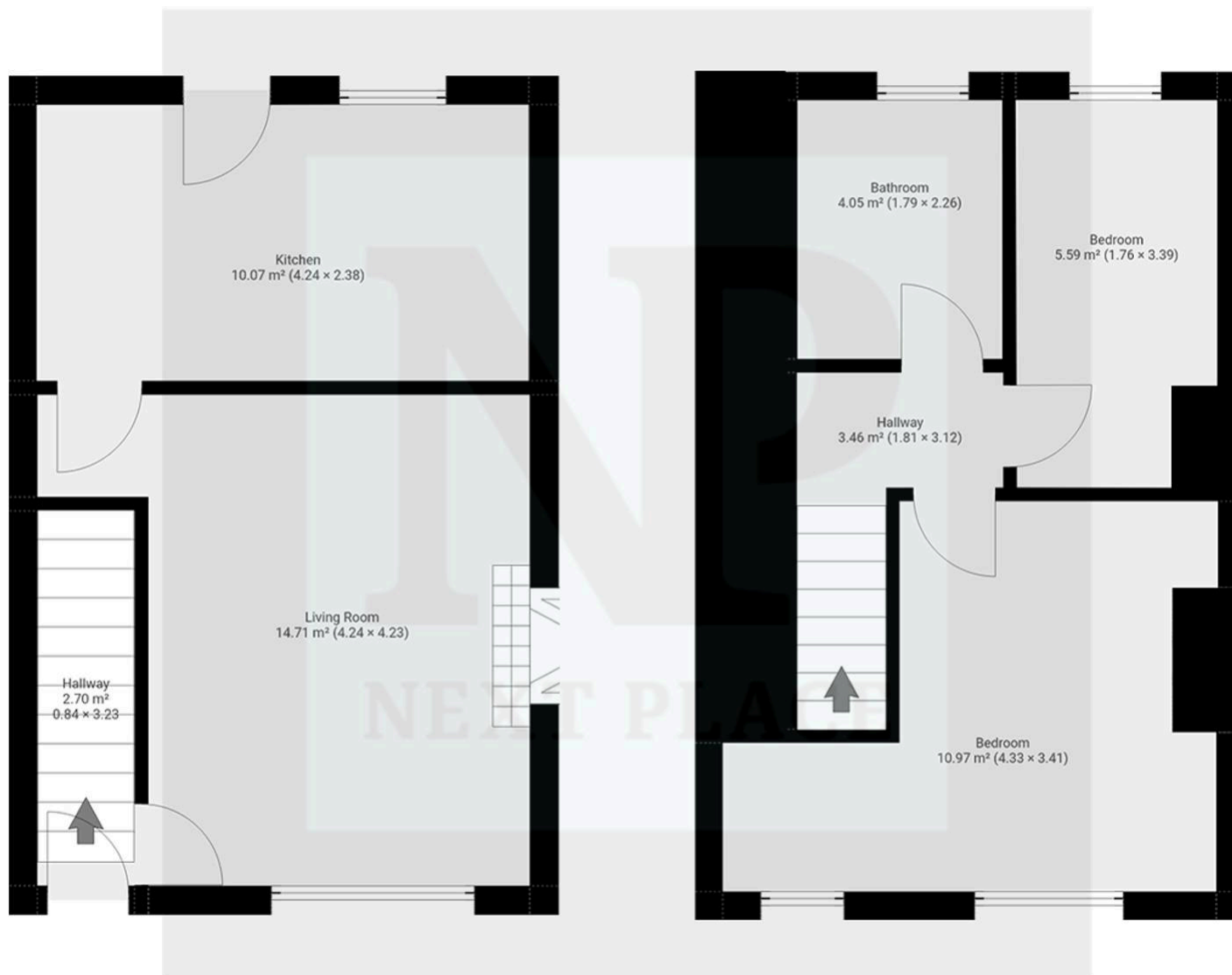
11' 1" x 5' 9" (3.39m x 1.76m)

Bathroom

7' 5" x 5' 10" (2.26m x 1.79m)









Next Place

Next Place Property Agents Ltd, 112 Glascote Road - B77 2AF
01827 50700 • info@next-place.co.uk • www.next-place.co.uk/

