



Apt 4, Gendle Court 2A Thomas Street, Tamworth
£950 pcm





Modern two-bedroom first-floor flat in a well-kept development. Open-plan kitchen, living area, and en-suite main bedroom. Allocated parking. Convenient location. Ideal for first-time buyers, downsizers, or investors.

Council Tax band: A

Tenure: Leasehold

- WELL PRESENTED 2 BEDROOMS APARTMENT
- FIRST FLOOR APARTMENT
- ALLOCATED PARKING
- EN-SUITE BATHROOM
- FAMILY BATHROOM
- THROUGH ENTRANCE HALLWAY



Living Room

10' 2" x 9' 9" (3.09m x 2.98m)

Kitchen

8' 11" x 9' 10" (2.71m x 2.99m)

Bedroom

11' 11" x 9' 7" (3.62m x 2.93m)

En-Suite

5' 3" x 6' 2" (1.61m x 1.89m)

Bedroom

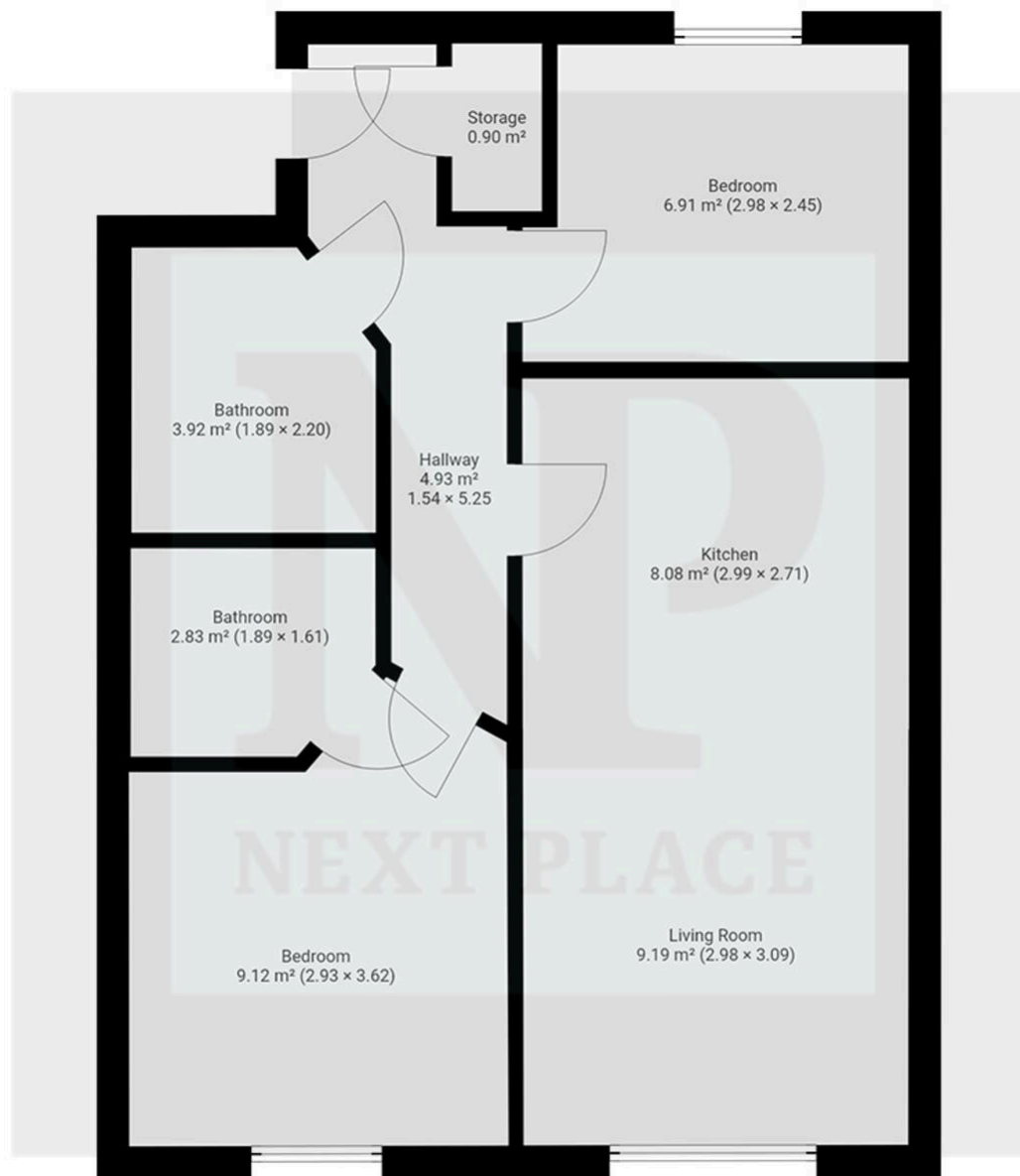
8' 0" x 9' 9" (2.45m x 2.98m)

Bathroom

7' 3" x 6' 2" (2.20m x 1.89m)









Next Place

Next Place Property Agents Ltd, 112 Glascote Road - B77 2AF

01827 50700 • info@next-place.co.uk • www.next-place.co.uk/

