



## 6 Barlow Close, Tamworth

Offers Over £300,000





Spacious family home with flexible layout, three bedrooms plus loft room, garage, driveway, and large garden. Scope to modernise and personalise. Ideal for families or home working. Council Tax band: C

Tenure: Freehold

- PROUDLY PRESENTED FOR SALE WITH NEXT PLACE PROPERTY AGENTS
- DETACHED PROPERTY
- THREE BEDROOMS WITH CONVERTED LOFT
- BAGS OF POTENTIAL
- INTEGRAL DOUBLE GARAGE
- EXTENSIVE DRIVEWAY
- UTILITY WITH DOWNSTAIRS WC



**Living Room**

18' 7" x 11' 9" (5.66m x 3.58m)

**Kitchen**

12' 3" x 7' 6" (3.74m x 2.28m)

**Utility Room**

10' 7" x 9' 5" (3.22m x 2.87m)

**Dining Room**

13' 0" x 7' 6" (3.97m x 2.28m)

**Bedroom**

10' 6" x 8' 9" (3.21m x 2.67m)

**Bedroom**

9' 7" x 7' 5" (2.91m x 2.26m)

**Bedroom**

9' 6" x 12' 6" (2.90m x 3.82m)

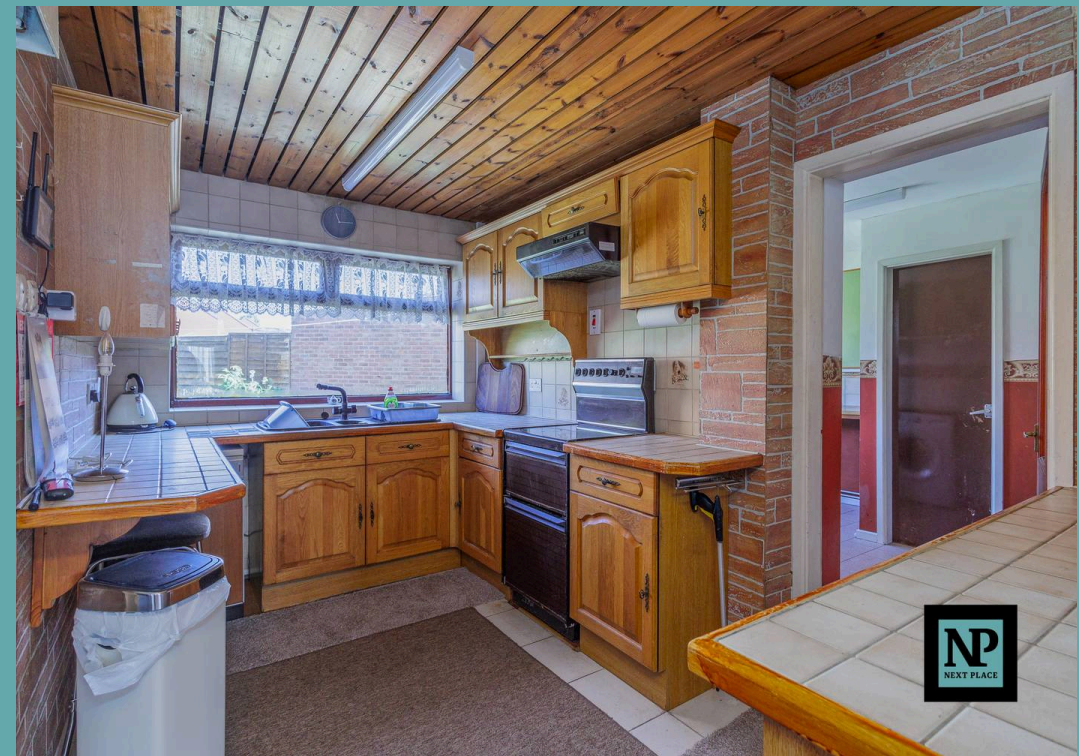
**Bathroom**

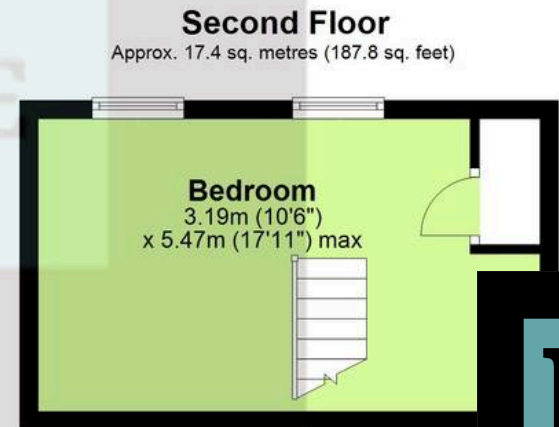
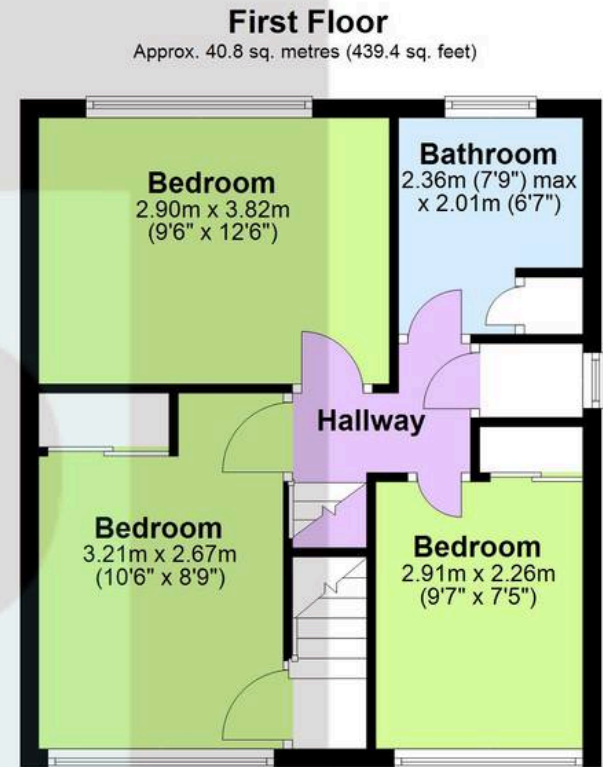
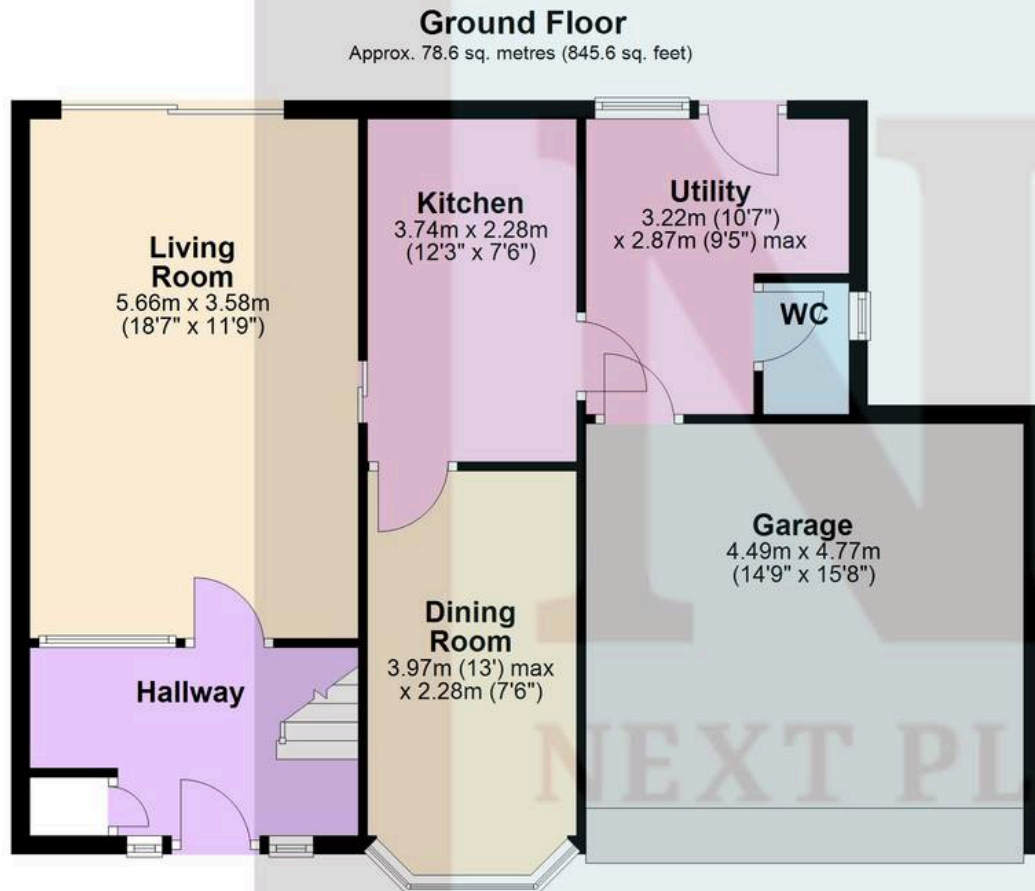
7' 9" x 6' 7" (2.36m x 2.01m)

**Loft Room**

10' 6" x 17' 11" (3.19m x 5.47m)







Total area: approx. 136.8 sq. metres (1472.8 sq. feet)

illustration purposes only  
Plan produced using PlanUp.





## Next Place

Next Place Property Agents Ltd, 112 Glascombe Road - B77 2AF  
01827 50700 • [info@next-place.co.uk](mailto:info@next-place.co.uk) • [www.next-place.co.uk/](http://www.next-place.co.uk/)

